

SureCrimp® Copper Compression Lugs



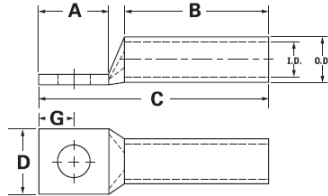
TYPE CLND

Features

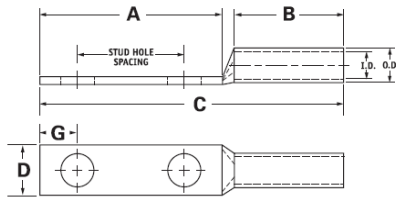
- Manufactured from high strength seamless copper tubing
- Electro-Tin plated
- Chamfered entry
- Color coded

Benefits

- Offers maximum conductivity and excellent crimping characteristics
- Provides low contact resistance
- For easy conductor insertion
- Identifies the proper compression die



DWG. A



DWG. B

Catalog Number	Wire Size	Expanded Wire Range	Bolt Size	Stud Hole Dia.	Stud Hole Spacing	Dimensions					Die Color Code	Die Index	O.D.	I.D.	DWG.
						A	B	C	D	G					
CLNS-3/0-12	3/0 AWG	3/0-2 AWG	1/2	0.562	-	1.25	1.5	3.189	0.885	0.546	ORANGE	i-50	0.609	0.484	A
CLNS-600-12	600kcmil	600kcmil - 250kcmil	1/2	0.562	-	1.25	2.687	4.746	1.712	0.546	GREEN	i-94	1.187	0.92	A
CLND-350-12-134	350kcmil	350KCMIL - 3/0 AWG	1/2	0.562	1.25	2.5	2	5.123	1.291	0.546	RED	i71	0.89	0.703	B
CLND-600-12-134	600kcmil	600kcmil-250kcmil	1/2	0.562	1.75	3	2.687	6.496	1.712	0.546	GREEN	i-94	1.187	0.92	B