

product specifications for: CLS 40 Panel Mounts

Item #: CLS40FRSB

Description

CAM CLS 40 1-1/8" threaded stud Female Panel Mount

Electrical Specifications

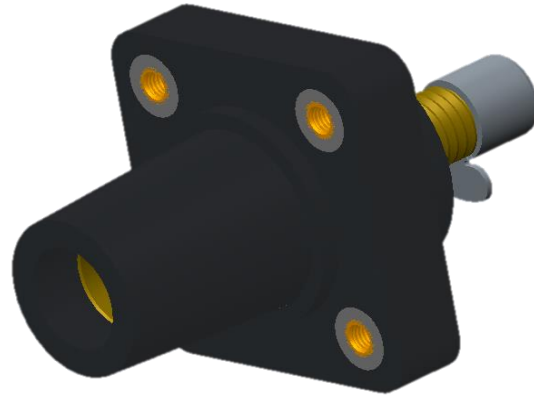
Max. Amperage: 400A
Max. Voltage: 600V AC/DC

Material Specifications

Housing Material: Santoprene TPV
Contact Material: Brass
Temperature Rating: -40°C to 105°C

Mechanical Specification

Gender: Female
Connection Type: 1/2" -13 X 1.125" threaded stud
(Torque to 25 ft.-lbs., do not over tighten)
Mounting: Brass eyelet for #10-32 bolt
(Bolts Not Provided)



Standards and Certifications

UL Listed: File E111198
Environmental Rating: Type 3R & 4

Example: CLS40FRSB + **A** = CLS40FRSB-A

